

Hybrid LED MiniMatcher® Models

Affordable Tabletop Color Matching and Inspection Systems



Hybrid LED MiniMatcher MM-1e/H (at left) and MM-4e/H (above)

GTI's Hybrid LED MiniMatchers provide the features and flexibility you need to evaluate color and communicate color decisions with confidence. Two models are offered. Both include an ASTM D1729, ISO 3668, AATCC Procedure #9, and SAE J361 compliant D65 source, multiple LED sources, and an elapsed time meter for the daylight source.

The ASTM D1729 and ISO 3668 viewing standards require that viewing conditions meet strict specifications with regard to color quality, light intensity, evenness of illumination, viewing/illumination geometry, and surround conditions. Being compliant to these standards ensures that consistent color decisions are made across the supply chain. The LED sources are for reviewing color in an end-use environment and testing for metamerism. The UV LED source is used to detect optical brighteners and fluorescents.

Hybrid LED MiniMatcher 1e Model

The easy-to-use Hybrid LED MM-1e/H includes three light sources. An ASTM D1729 compliant D65 source, 2700K LED, and 4000K LED. A 315–400nm Black Light Blue LED is available as an option. Alternate sources are also available. Lamps are controlled by toggle switches.

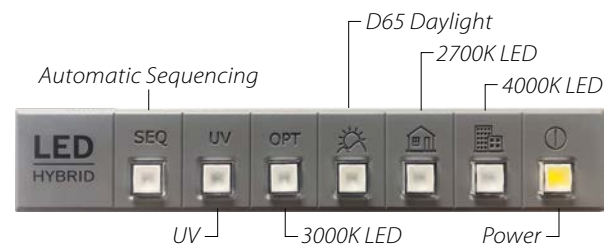
Hybrid LED MiniMatcher 1e Control Panel



Hybrid LED MiniMatcher 4e Model

The Hybrid LED MM-4e/H includes five light sources. The same four as the MM-1e/H plus an additional 3000K LED lamp. Alternate sources are available (see specifications). This model has an illuminated push button control that confirms which light source is selected. It also features an easy-to-program one-touch automatic light source sequencing feature which provides a fixed viewing time for each source.

Hybrid LED MiniMatcher 4e Control Panel



Both Models Feature:

- Conforms to ASTM D1729, ISO 3668, SAE J361, and AATCC Procedure #9 viewing standards
- NIST traceable certificate of product conformance included
- Quick set-up without tools
- Elapsed time meter for daylight source
- UV transmissive, prismatic lens for even illumination
- Multiple light sources
- Munsell N5 or N7 gray surround
- Easy to use interface



Hybrid LED MiniMatcher® Models

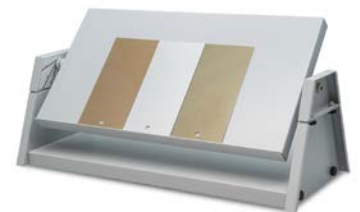
Product Specifications/Model Comparisons

Features	Hybrid LED MiniMatcher 1e	Hybrid LED MiniMatcher 4e
Number of light sources	4	5
Light source operation	Toggle Switches	Push Button
Automatic source sequencing	N/A	✓
Lamp timer for primary source	✓	✓
UV transmissive, prismatic lens	UV Model	✓
Compliance with ASTM D1729, SAE J361, ISO 3668, Tappi T 515, BS-950/2, AS 1580.6001.1, and AATCC Procedure #9	✓	✓
Surround color	Munsell N5 or N7	Munsell N5 or N7
Viewing table (See below)	Optional	Optional
Included Light Sources		
Daylight source	6500K – D65 Fluorescent or 5000K – D50 Fluorescent	6500K – D65 Fluorescent or 5000K – D50 Fluorescent
Store / Office light	4000K LED	4000K LED
Home light	2700K LED	2700K LED
Optional	N/A	3000K LED
UV source	Optional 315–400nm Black Light Blue LED	315–400nm Black Light Blue LED
Available Light Sources (both models)		
Daylight sources	5000K – D50 Fluorescent Lamps 6500K – D65 Fluorescent Lamps 7500K – D75 Fluorescent Lamps	
LED sources	2700K, 3000K, 3500K, 4000K, Special Walmart LED	
Other sources	Cool White Fluorescent, TL83, TL84, Incandescent, Horizon, SPX35, and UV	
Physical Specifications		
Viewing area (h×w×d)	14"×24"×13" (36 cm × 61 cm × 34 cm)	14"×24"×16" (36 cm × 61 cm × 40 cm)
Physical dimensions (h×w×d)	19"×26"×16.5" (48 cm × 67 cm × 42 cm)	19"×26.5"×19" (48 cm × 67 cm × 48 cm)
Shipping weight	30 lbs (14 kg)	38 lbs (17 kg)

Optional Viewing Tables

45 degree and variable angle viewing tables for flat samples

Model	Description	Viewing Surface (h×w)
VS-45/2e	45 degree viewing table for MM-1e and MM-4e	8.5"×16"
VS-45DC	45 degree viewing table for MM-1e and MM-4e	8.5"×22"
VVT-816	Variable angle viewing table for MM-1e and MM-4e	8"×16"



GTI is a leading manufacturer of tight tolerance lighting systems for critical color viewing, color communication, and color matching. An in-house spectroradiometric laboratory and a 100% measurement and verification production process guarantees that precision and accuracy is built into all products. All products are shipped with a certificate of product conformance (NIST traceable).



cmlite



Tel: 845-562-7066 • Email: sales@gtilite.com • www.gtilite.com

GTI Graphic Technology, Inc. | 211 Dupont Avenue, P.O. Box 3138 | Newburgh, New York 12550

GTI GmbH | Tel: +49 461 99 57 60 20 | www.gti-normlicht.de

© GTI Graphic Technology, Inc.
Specifications are subject to change. Fluorescent lamps contain mercury.